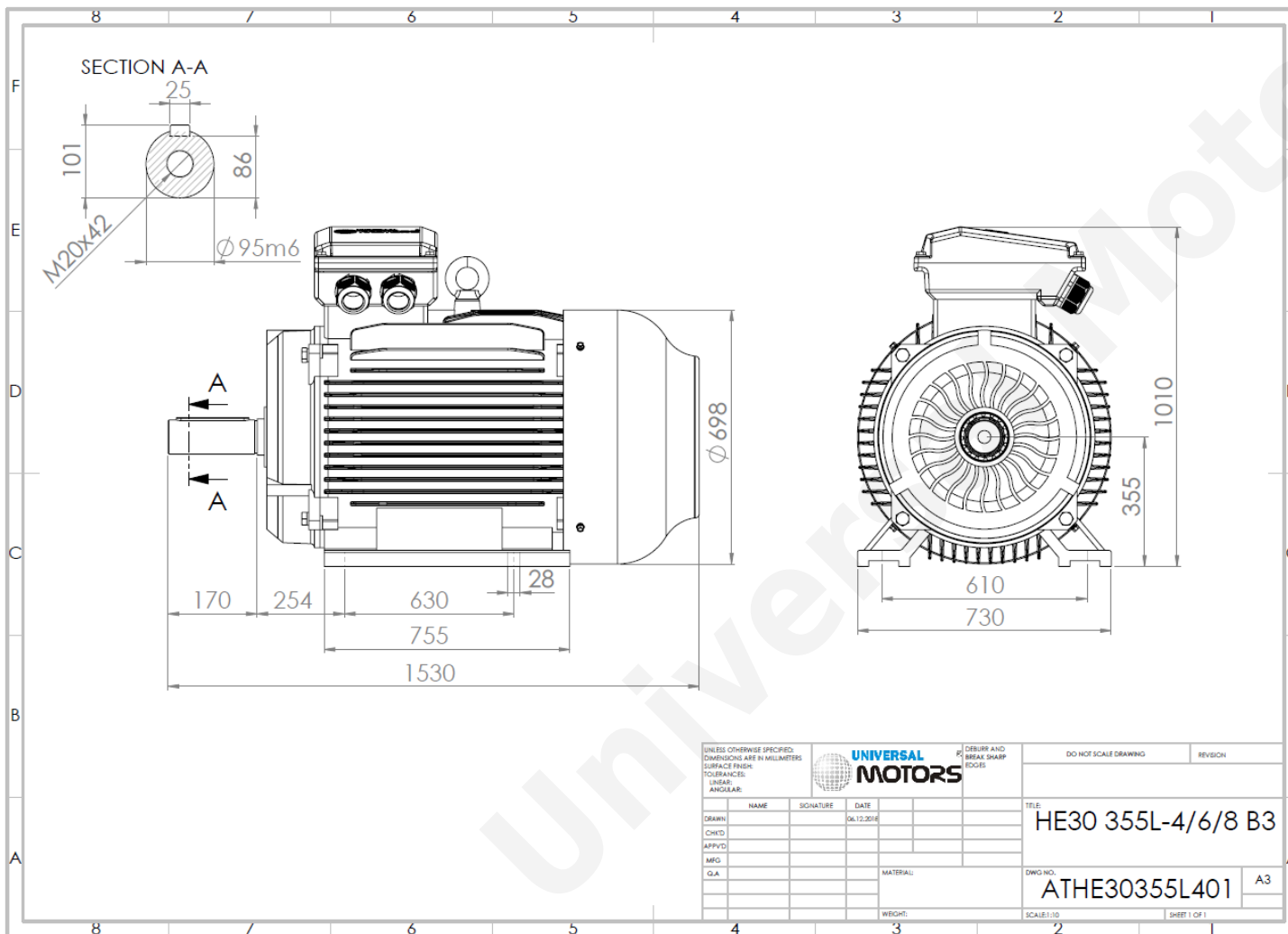




# TECHNICAL DATA

Three Phase Electric Motors - Cast Iron Frame  
 HE30 355 L-6 IE2  
 250 kW / 340 Cv  
 990 RPM



Motor type:	<b>HE30 355 L-6 IE2</b>
Output:	<b>250 kW / 340 Cv</b>
Speed (min <sup>-1</sup> ):	<b>990 RPM</b>
Frequency:	<b>50 Hz</b>
Voltage:	<b>400 V</b>
Current:	<b>437 A</b>
Power factor (Cos Ø):	<b>0.87</b>
Poles:	<b>6</b>
Insulation class:	<b>F</b>
Temperature rise Class:	<b>B</b>
Efficiency 50%:	<b>94.3 %</b>
Efficiency 75%:	<b>95.3 %</b>
Efficiency 100%:	<b>95.0 %</b>
Torque:	<b>2412 N.m</b>
Tstarting/Tnominal:	<b>2.0</b>
Istarting/Inominal:	<b>6.7</b>
Tmaximum/Tnominal:	<b>2.0</b>
Noise:	<b>74 Db(A)</b>
Weight:	<b>1700 Kg</b>
Bearing DE:	<b>NU 322</b>
Bearing NDE:	<b>6322 C3</b>

UNLESS OTHERWISE SPECIFIED: DIMENSIONS ARE IN MILLIMETERS SURFACE FINISH: TOLERANCES: LINEAR: ANGULAR:				UNIVERSAL MOTORS		R/ DEBURR AND BREAK SHARP EDGES.		DO NOT SCALE DRAWING		REVISION	
DRAWN	NAME	SIGNATURE	DATE			TELE:		HE30 355L-4/6/8 B3			
CHK'D			06.12.2016			DWG NO.		ATHE30355L401		A3	
APP'VD						MATERIAL:					
MFG						WEIGHT:					
Q.A.						SCALE:1:10				SHEET 1 OF 1	

Regime - S1

Altitude - 1000m

Environment Temperature - 40°C

## CONTACTS:

UNIVERSAL MOTORS Tel: +351 252 299 080  
 Rua de São Brás,745 Fax: +351 252 299 089  
 4480-782 VILA DO CONDE Mail: [geral@universalmotors.pt](mailto:geral@universalmotors.pt)

\* References applied only in the UK